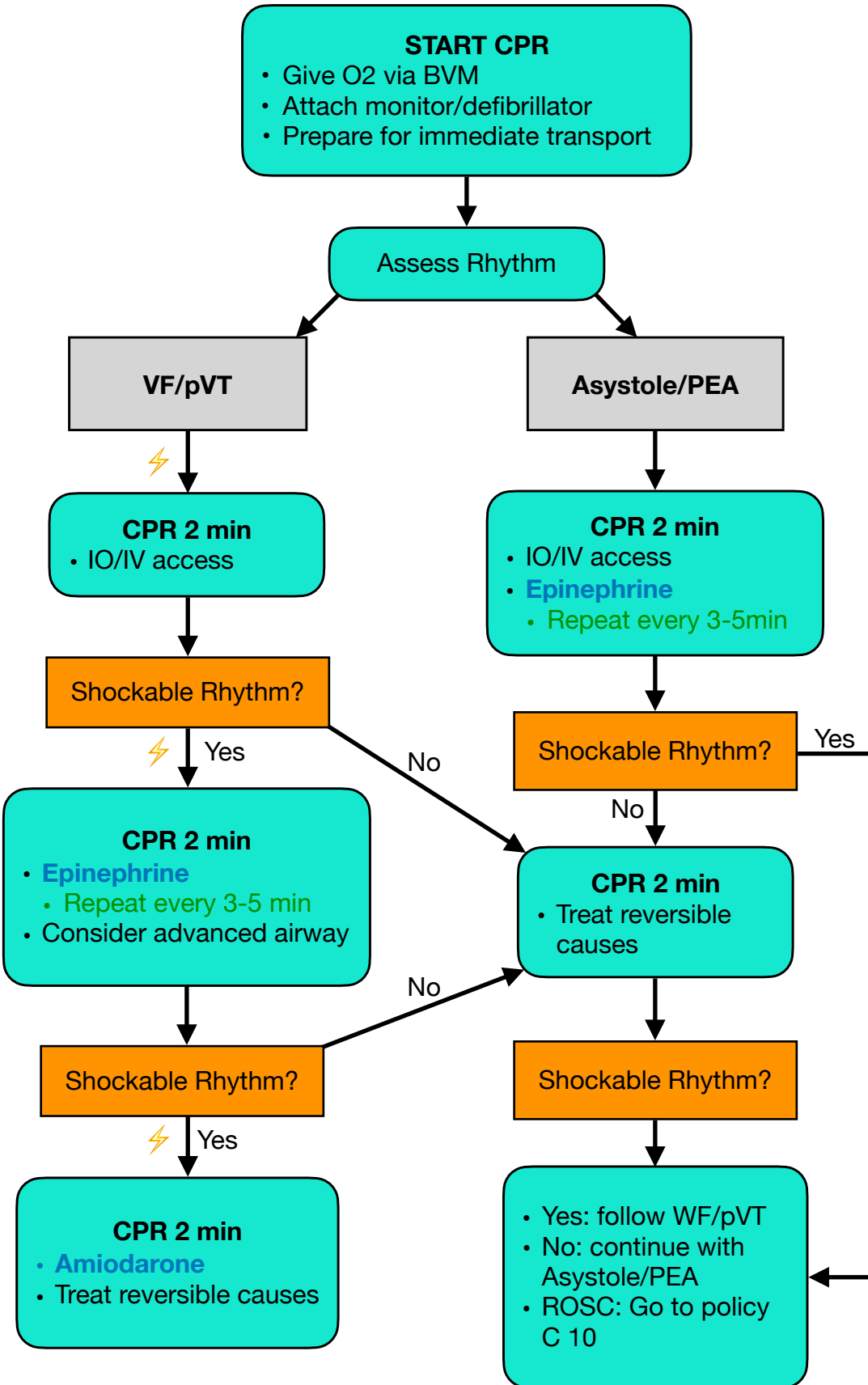


# PEDIATRIC CARDIAC ARREST



- CPR Ratios**
- One rescuer: 30:2
  - Two rescuer: 15:2
- Airway Management**
- BLS airway is preferred
  - Avoid excessive ventilation
  - Place younger child in sniffing position for neutral airway positioning
  - Consider advanced airway only if patient height > color coded resuscitation tape **and** unable to ventilate with BVM
  - Laryngoscopy for ETT must occur with CPR in progress.
  - **Do not interrupt CPR for >10 seconds for tube placement**
  - Use ETCO2
  - Maintain SpO2 94-99%
  - 1 breath every 6 sec.
- Drug Therapy**
- **Epinephrine** 0.01mg/kg (0.1mg/ml) IV/IO
    - Repeat every 3-5 min
  - **Amiodarone** 5mg/kg IV/IO followed by or diluted in 20-30ml NS
    - MR x 2 for refractory VF/pVT
    - Max single dose: 300mg
- Reversible Causes**
- Hypovolemia
  - Hypoxia
  - Hydrogen Ion (Acidosis)
  - Hypo/Hyperkalemia
  - Hypothermia
  - Tension Pneumothorax
  - Tamponate (cardiac)
  - Toxins
  - Thrombus
  - Trauma