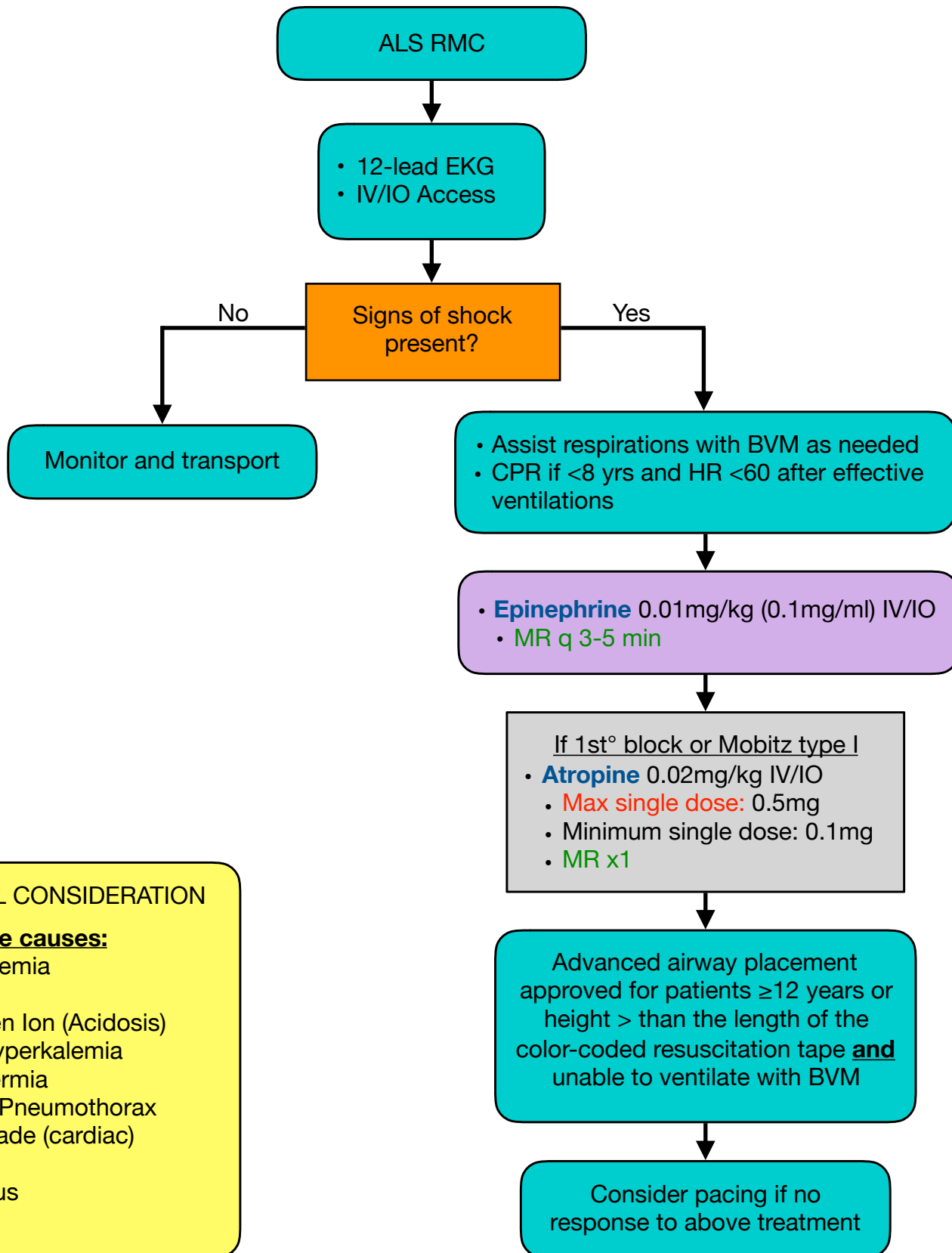


# PEDIATRIC BRADYCARDIA

## Indications

- HR <60 causing cardio-respiratory compromise



**SPECIAL CONSIDERATION**

**Reversible causes:**

- Hypovolemia
- Hypoxia
- Hydrogen Ion (Acidosis)
- Hypo/Hyperkalemia
- Hypothermia
- Tension Pneumothorax
- Tamponade (cardiac)
- Toxins
- Thrombus
- Trauma