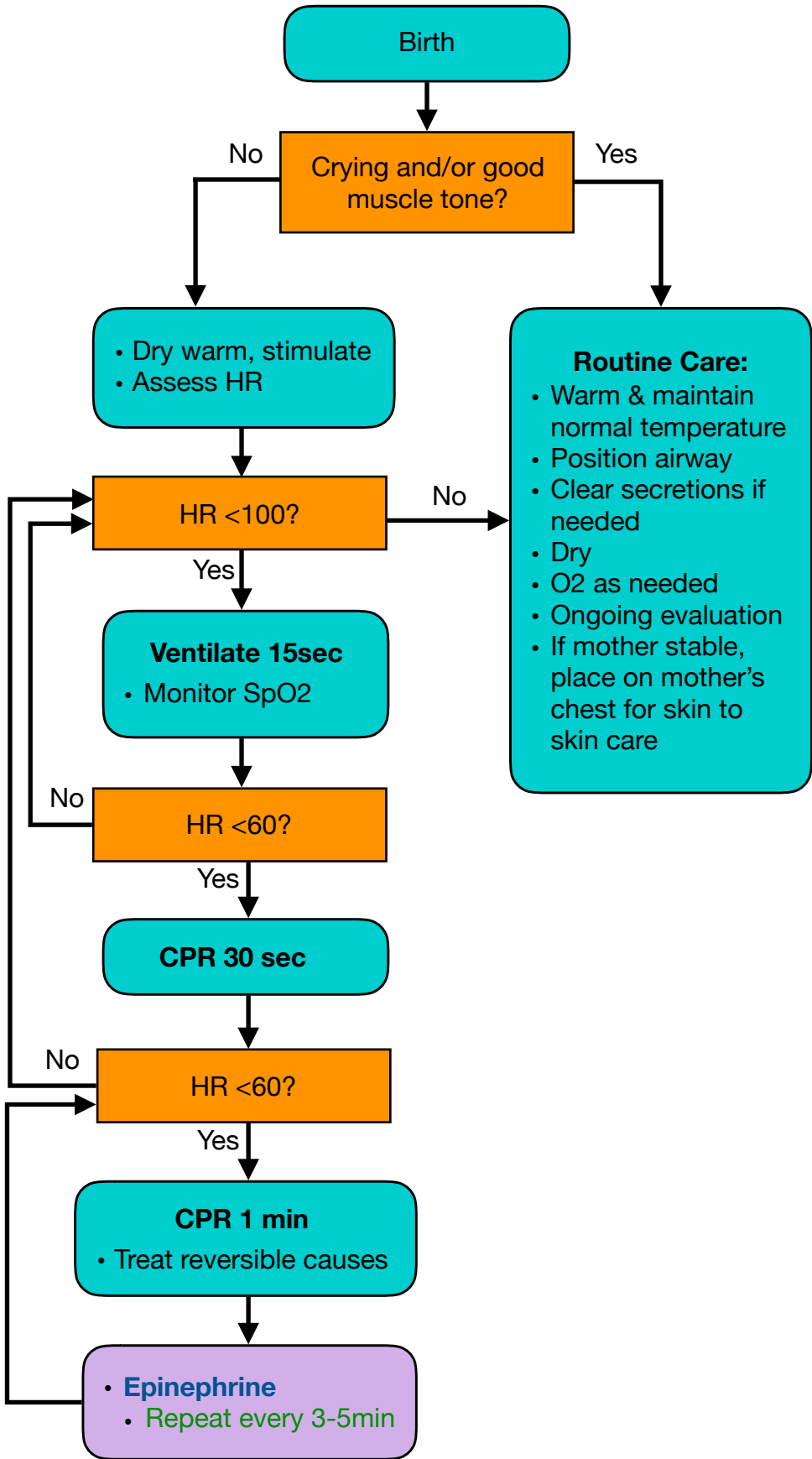


NEONATAL RESUSCITATION



CRITICAL INFORMATION

- Measure with color-coded resuscitation tape
- Compress at rate of 90bpm
- Use metronome or similar device
- 3:1 compression/ventilation ration with 2 person CPR
- Peripheral cyanosis is a normal finding
- Delay cord clamping until 30-60 seconds after birth, then double clamp 6-8" from baby and cut between clamps
- If cord is around neck and can't be slipped over the head, double clamp and cut between clamps

Airway Management

- Suction mouth then nose
- Ventilate at a rate of 60 breaths/min
- Use 2 person BLS airway management whenever possible
- Avoid excessive ventilation
- If HR >100 but SpO2 not in target range or central cyanosis present, administer blow-by O2 at 10LPM

Drug Therapy

- **Epinephrine** 0.01mg/kg (0.1mg/ml concentration) IV/IO
 - Repeat q3-5 min
- **NS** fluid bolus 10ml/kg IV/IO

SpO2 Normal Values After Birth (in Min)

1 min	60-75%
2 min	65-70%
3 min	70-75%
4 min	75-80%
5 min	80-85%
10 min	85-95%