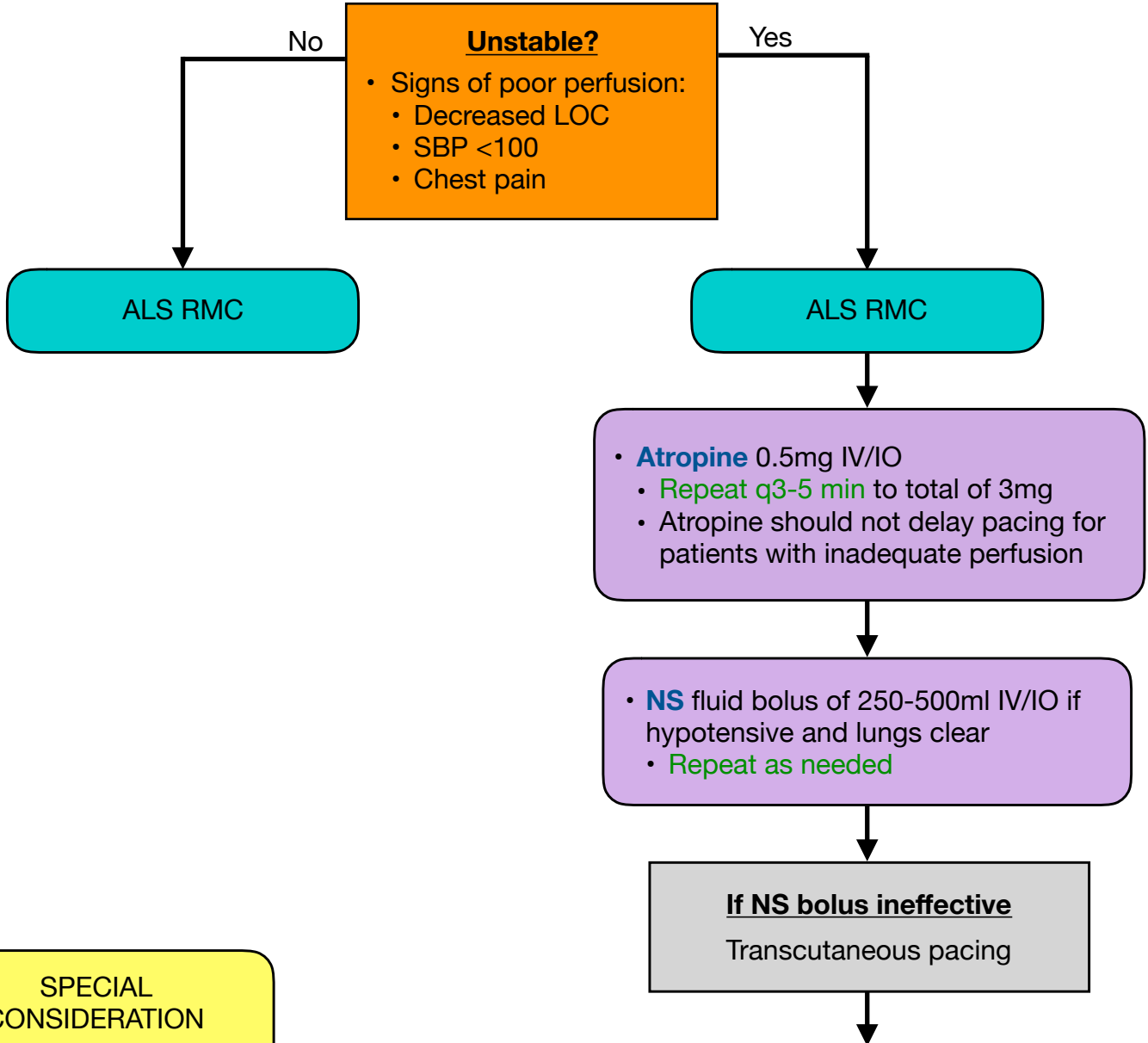


BRADYDYSRHYTHMIAS

Indications

- HR <50 with adequate or inadequate perfusion



SPECIAL CONSIDERATION

Reversible Causes

- Hypovolemia
- Hypoxia
- Hydrogen Ion (Acidosis)
- Hypo/Hyperkalemia
- Hypothermia
- Tension Pneumothorax
- Tamponade (cardiac)
- Toxins
- Thrombus
- Trauma

If SBP <80 mmHg

- 🚑 **PHYSICIAN CONSULT** for **Push-dose Epinephrine**
 - Mix 1ml Epinephrine (0.1mg/ml concentration) with 9ml NS in a 10ml syringe
 - Administer **Push-dose Epinephrine** 1ml IV/IO
 - Repeat every 3-5 min
 - Titrate to maintain SBP >80mmHg
 - Monitor BP every 5 minutes