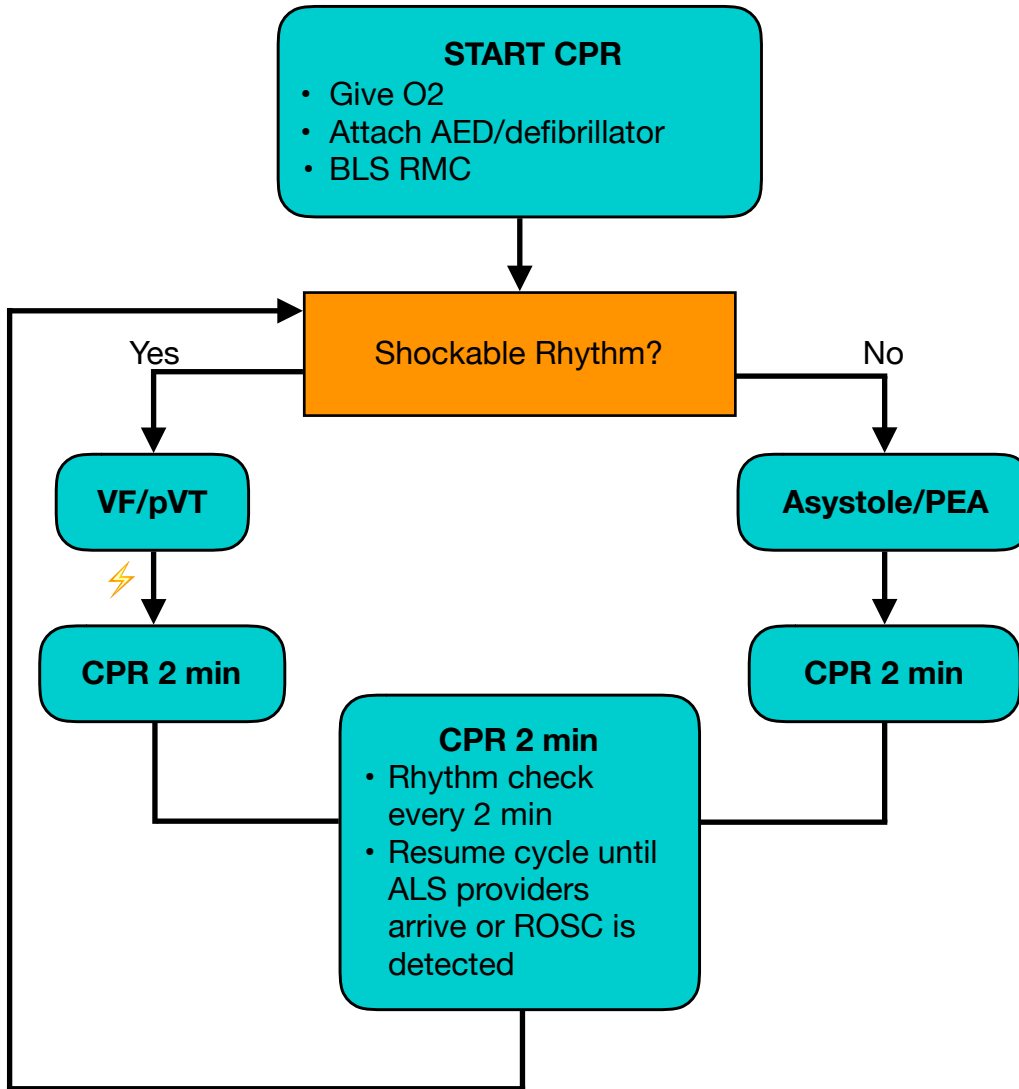


CARDIAC ARREST BLS

Indications

- Unresponsive; no breathing or has agonal respirations; no pulse



CRITICAL INFORMATION

- Witnessed vs Unwitnessed
- Consider pre-cordial thump witnessed and defibrillator not immediately available
- Compress at 110bpm
- Use metronome or similar device
- Mechanical CPR is mandatory during transportation
- Change compressors every 2 minutes
- Minimize interruptions
- If hypothermic <95F, initiate warming measures, start CPR, and immediately transport
- Defibrillate per manufacturer's recommendations
- Do not stop compressions while defibrillator is charging
- Resume compressions immediately after shock

Airway Management

- BLS airway preferred during first 5 minutes
- Use two-person BLS airway management whenever possible
- Avoid excessive ventilation
- 30:2 compression/ventilation ratio or continuous compressions with ventilations on the 10th upstroke of compressions